

Modular Preparation 1400 mm Cupboard Base for Sink Top

ITEM # _____

MODEL # _____

NAME # _____

SIS # _____

AIA # _____



121827 (TEL2S14)

 Cupboard Base for Sinks
Top, 1400mm

Short Form Specification

Item No. _____

Constructed entirely in 304 AISI stainless steel. Front and rear longitudinal stainless steel c-channel reinforcement. Easily removable sliding doors with sound deadening internal and external panels have stainless steel bearings on the top and a hidden runner on the bottom. 150mm height-adjustable (0/+90mm) oversized feet (65x65mm) can be removed for masonry installation. 45° degree internal side corner junction system.

Main Features

- Masonry installation possible by simply removing feet.
- Extremely easy to clean thanks to the smooth edges.

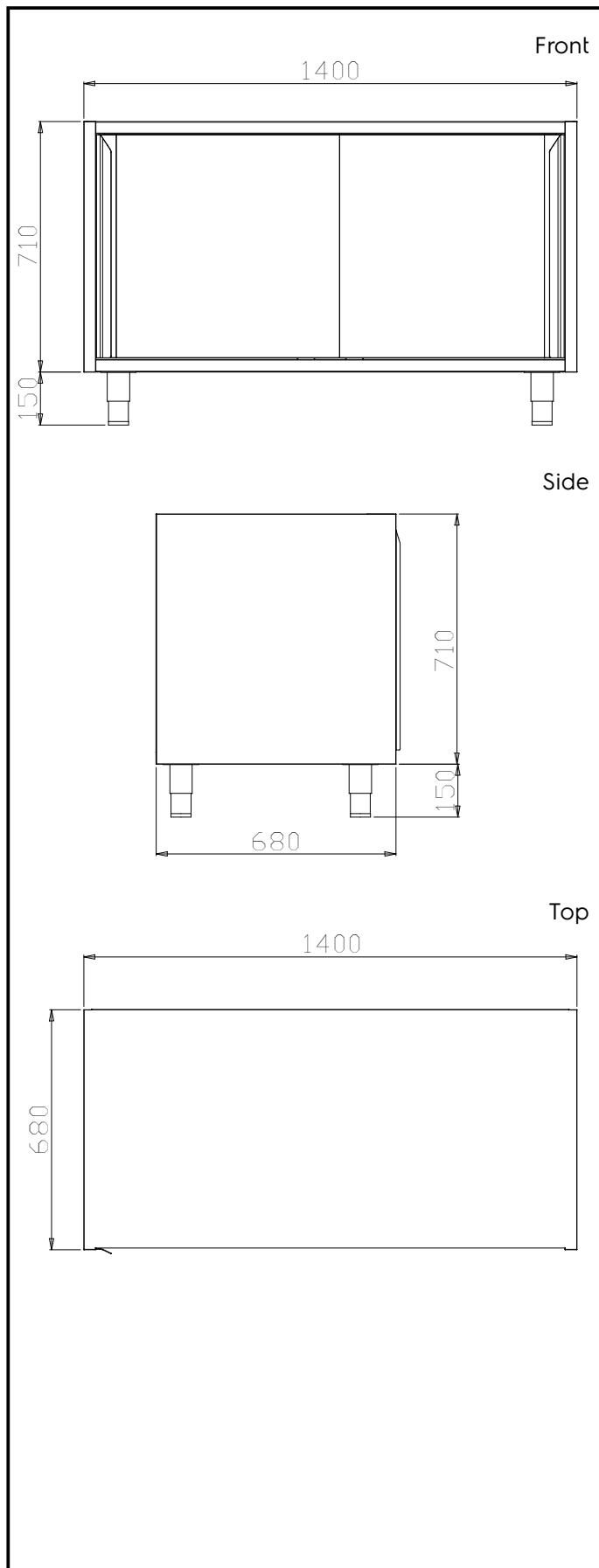
Construction

- Mounted on 150 mm height adjustable (0/+90 mm) oversized (65x65 mm) feet.
- Front and rear lengthwise stainless steel c-channel reinforcement, 15/10 (16 gauges).
- Internal sides supporting the structure to have 45° degrees internal side corners junction system.
- 30 mm high middle-shelf in AISI 304 stainless steel, height-adjustable in 3 positions, with inner double fold to eliminate gaps between sides and back.
- Sliding doors, with sound deadening internal and external panels, run on the upper part on the s/s bearings and on the lower part on a hidden runner. Doors are easy to remove thus facilitating cleaning procedures.
- Constructed entirely in AISI 304 Stainless Steel with Scotch Brite finish.

Optional Accessories

- Stainless steel plinth, 1400mm PNC 855830
- Stainless steel plinth, 1500mm PNC 855831
- Stainless steel plinth, 1600mm PNC 855832
- Stainless steel plinth, 1700mm PNC 855833
- Stainless steel plinth, 1800mm PNC 855834
- Stainless steel plinth, 1900mm PNC 855835
- Stainless steel plinth, 2000mm PNC 855836
- Stainless steel plinth for end elements, 700mm depth PNC 855837
- Stainless steel plinth for end elements, central installation, 700mm depth PNC 855838
- Stainless steel plinth, 2400mm PNC 855839

APPROVAL: _____



Key Information:

| | |
|-------------------------------------|---------|
| Cabinet width: | |
| 121827 (TEL2S14) | 1320 mm |
| Cabinet depth: | 570 mm |
| Cabinet height: | 610 mm |
| N° of doors: | 2 |
| Door Type: | Sliding |
| External dimensions, Width: | 1400 mm |
| External dimensions, Depth: | 680 mm |
| External dimensions, Height: | 860 mm |
| Net weight: | 44 kg |